

LIGHT OF CHRIST ORG CHART 2020

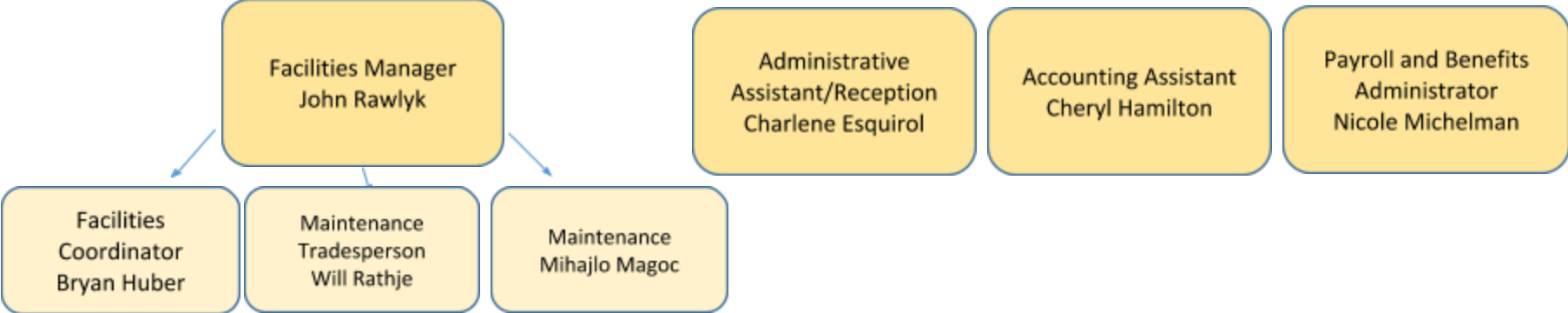
SENIOR ADMIN

Director of Education
Cory Rideout

Executive Assistant
Becki Schell

Human Resources
Officer
Pat Derksen

CFO
Jordan Kist



Superintendent
Karen Hrabinsky

Instructional
Consultant
Nadine Anderson

Instructional
Consultant
Michelle Rideout

Superintendent
Caralynn Gidych

Educational
Psychologist
Kathy Sullivan

Speech & Language
Pathologist
Trina Bahrey

Speech & Language
Pathologist
Jennifer Heggstrom

Student Services
Linsey Koch

Superintendent
Tom Hawboldt

Technology
Consultant
Tyson Volk

Systems Technician
Joanne Lloyd

System Technician
Debbie Yaschuk

Projects Coordinator
Ramona Stillar